
1 Requirements

1.1.1 Minimum Hardware Requirements

- CPU:
Pentium 1 GHz or higher.
- RAM:
512 MB or more.
- Video card:
3D accelerated;
OpenGL 1.1 compatible;
800x600 65,535 colors.
- Disk space:
you may need up to 650 MB of available
(if MS Framework is not yet installed).

you may need up to 48 MB of available
(if MS Framework is already installed).
- USB:
two free USB(2 or 3) ports.
One for the license dongle and one for the Smarty.

1.1.2 Supported Operating Systems

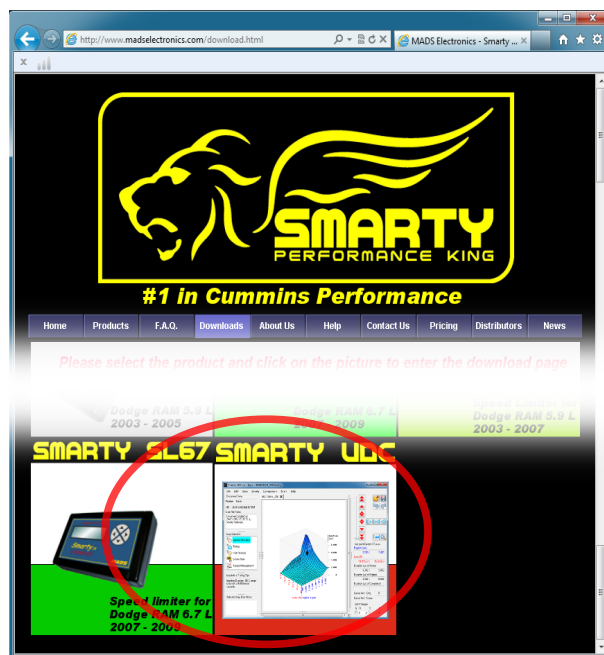
- | | |
|---------------|------------------------|
| Windows XP | 32 bit Service Pack 3. |
| Windows Vista | 32 bit Service Pack 2. |
| Windows Vista | 64 bit Service Pack 2. |
| Windows 7 | 32 bit Service Pack 1. |
| Windows 7 | 64 bit Service Pack 1. |
| Windows 8 | 32 bit. |
| Windows 8 | 64 bit. |

Revised date: 25/05/26

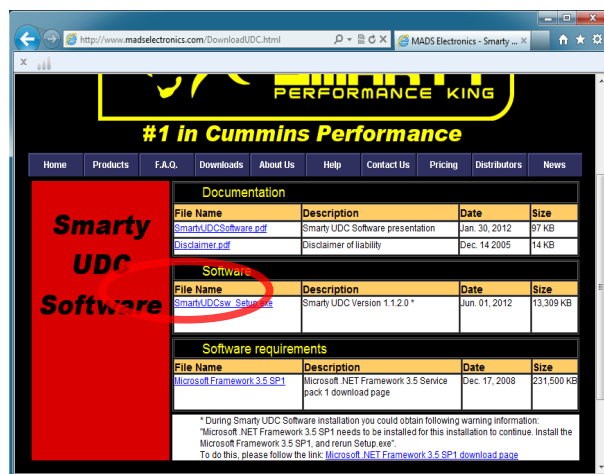
2 SmartyUDCsw program installation

2.1 Downloading the SmartyUDCsw program

2.1.1 Go to our website
www.tomelectronics.it/download and click on
 "Smarty UDC".



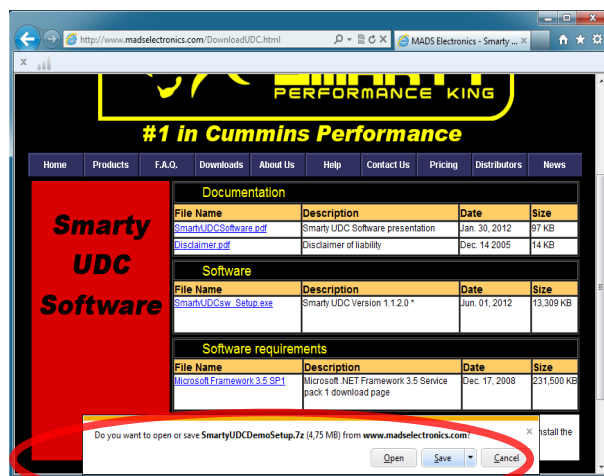
2.1.2 In the "Software" section on that page
 click on the link "SmartyUDCsw_Setup.exe".



Revised date: 25/05/26

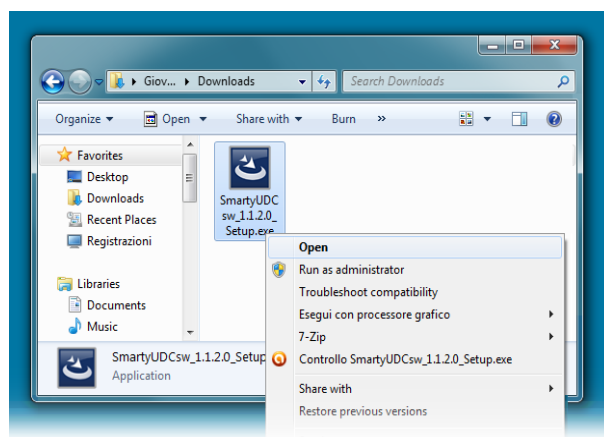
2.1.3 If asked if you want to run or save the file, save it in any folder on your PC.

2.1.4 (Should the download start automatically, the file will be saved in the "Downloads" folder.)



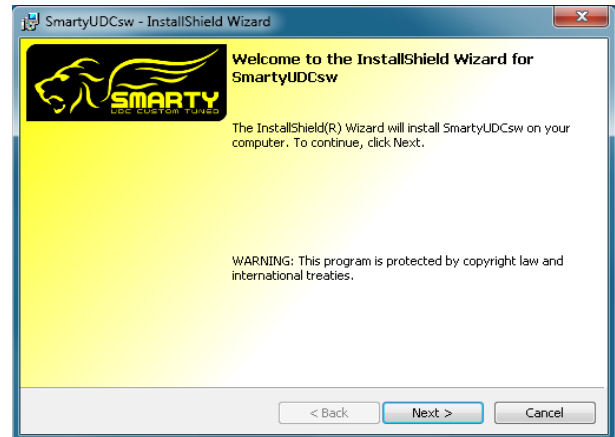
2.2 Installation of the SmartyUDCsw program

2.2.1 Double click on the .exe file (or right click and then Open) you have just extracted to start the installation.

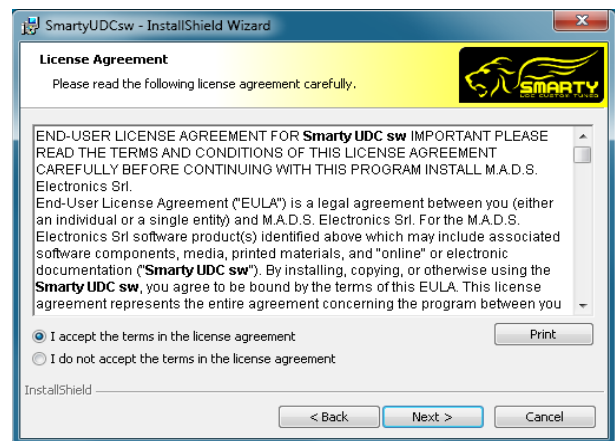


Revised date: 25/05/26

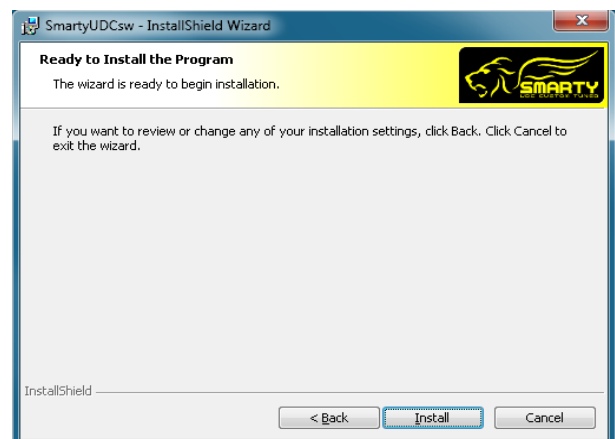
2.2.2 A window "Welcome to the InstallShield Wizard for SmartyUDCsw" pops up, click on "Next >".



2.2.3 In the window "License agreement", select "I accept the terms in the license agreement" and then click on "Next >".

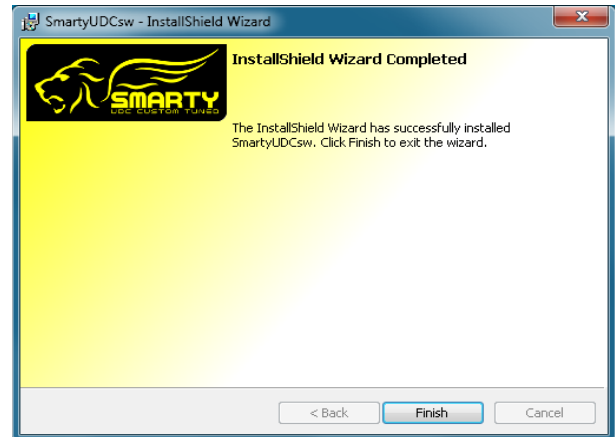


2.2.4 In the window "Ready to install the program", click on "Install". (If the Windows UAC is active in "User Account Control", click on "Yes".)

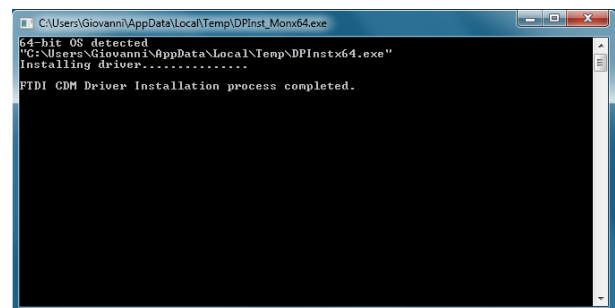


Revised date: 25/05/26

2.2.5 Wait for the installation to complete. You will see the message: "InstallShield Wizard Completed" click on "Finish".

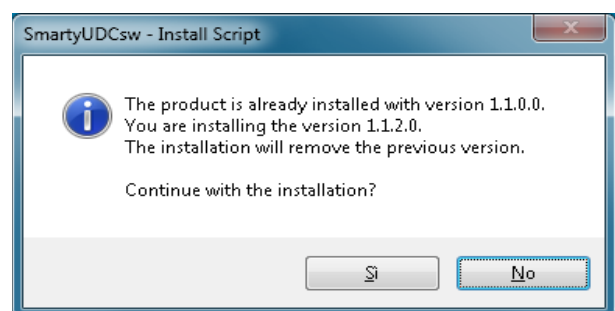


2.2.6 (Eventually you may have to wait for the installation of the FTDI driver to complete. That window will close automatically without any further intervention.)



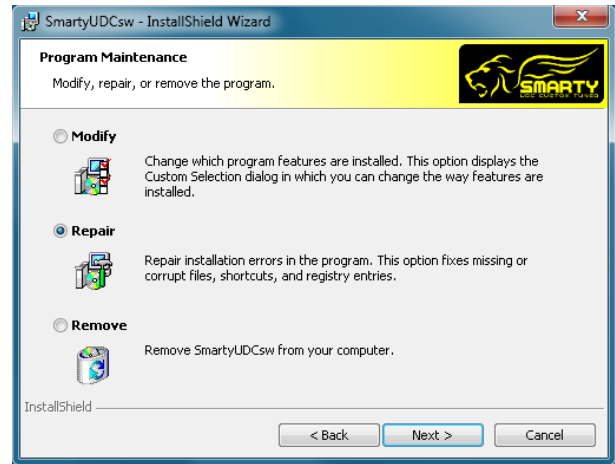
2.3 Exceptions to the typical (above) installation process.

2.3.1 If a previous (older) version of the SmartyUDCsw was already installed on your computer in the window: "SmartyUDCsw – Install Script", click on "Yes".



Revised date: 25/05/26

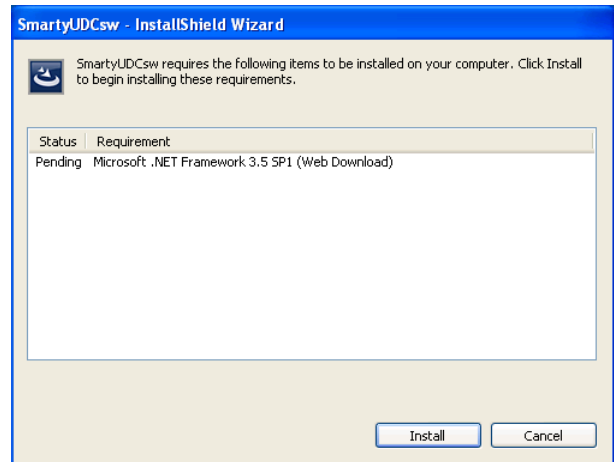
2.3.2 If the same revision of the SmartyUDCsw is already installed on the PC, in the window "Program Maintenance" click on "Cancel" or repair and re install the software.



Revised date: 25/05/26

2.3.3 Should Windows on your PC not have already the "Microsoft .NET Framework 3.5 SP1" installed, during the installation you will get the window "SmartyUDCsw requires the following..." click on "Install".

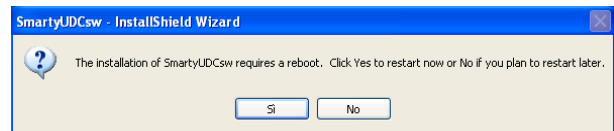
2.3.4 Now you need to wait for the "Microsoft .NET Framework 3.5 SP1" to download and install.



2.3.5 In the window "The installation of SmartyUDCsw requires a reboot....", click on "Yes".

2.3.6 Wait for the PC to reboot, once Windows has started again the installation will proceed

(See the above steps for the typical installation.)



Revised date: 25/05/26

3 Starting the SmartyUDCsw program

3.1 Insert the SmartyUDCsw main license dongle!

3.1.1 Insert the main license dongle in one of your PC's USB ports.

3.1.2 The LED on the dongle will flash for a short moment and Windows will install the needed driver for the dongle automatically (No user intervention required.)

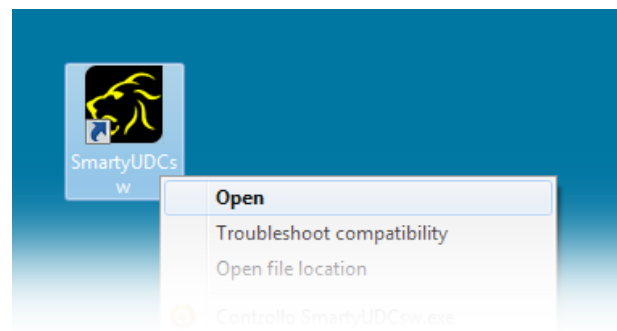
3.1.3 If no dongle is inserted into the PC the UDC software will start only in Demo mode!!!



3.2 Starting the SmartyUDCsw

3.2.1 Double click (or right click and then Open) on the "SmartyUDCsw" icon which has been created on your desktop (The one with the Lion head...).

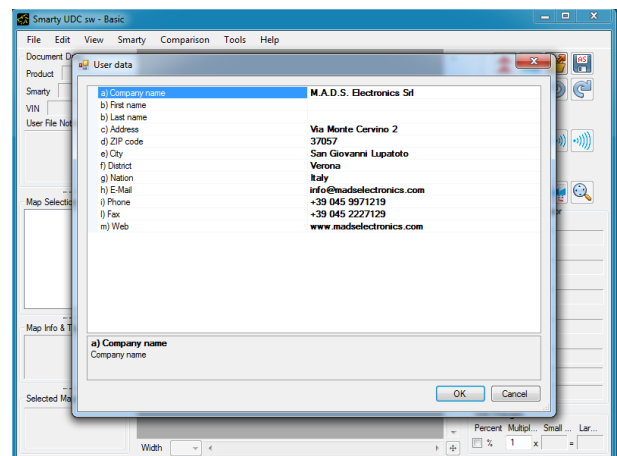
OR you can find it: "Start > All programs > TomElectronics Srl > SmartyUDCsw".



3.3 When first started, complete the user data

3.3.1 During the first start (or if never completed) you will be requested to complete the user data. (We do not collect any information from your PC! This is needed only to identify the files you create with the tuning software!).

3.3.2 It possible to update those information's in a second time from the menu: "Tools > User data...".

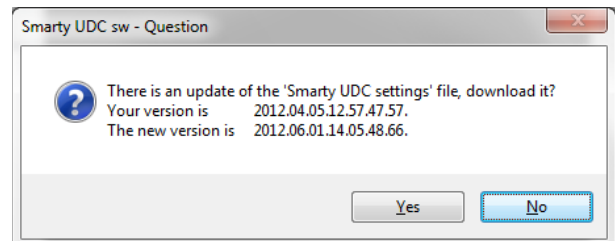


Revised date: 25/05/26

3.4 Download of updated 'Smarty UDC settings'

3.4.1 By default, at every start of the tuning software, the availability of a newer version is checked through the internet.

3.4.2 Should a new version have become available, you will be informed and requested to download the update.



Important advice!

We highly recommend that you keep the software up to date!

Revised date: 25/05/26

4 Update Smarty's software with the UDCsw program.

The update manager is completely functional also in Demo version!

4.1 Smarty update Manager

4.1.1 Connecting the Smarty to the PC

Warning!

Never connect the Smarty to the vehicle and the PC at the same time. Severe damage to the Smarty and/or the PC will result. These defects will not be covered under warranty!

4.1.1.1 Connect the Smarty to a USB port on the PC.

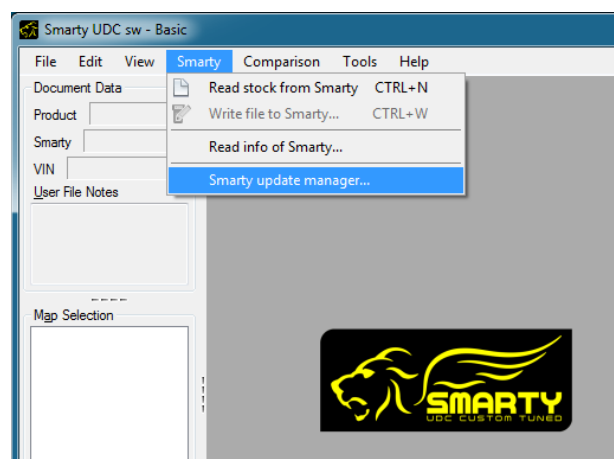
4.1.1.2 The Smarty will receive the power from the PC through the USB port. Wait for Smarty's main menu to show up on it's display.

4.1.2 Updating a Smarty that already has an UDC compatible software installed.

Notice.

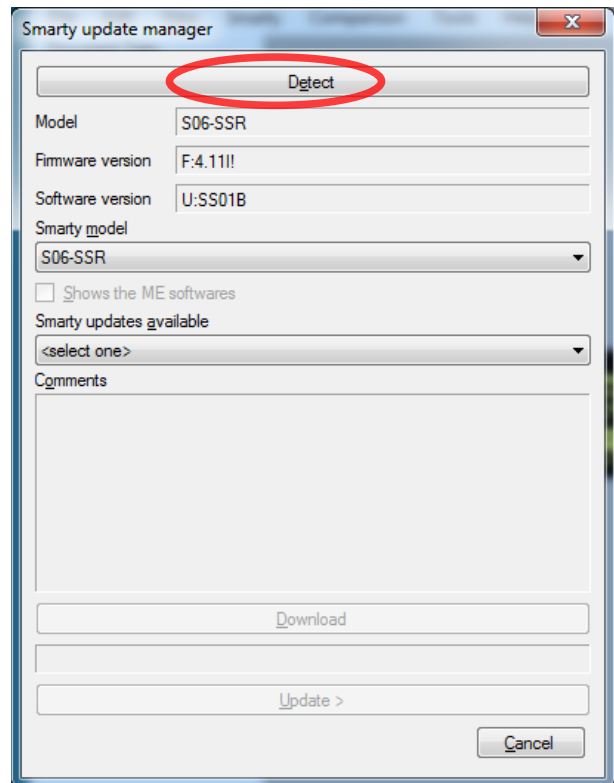
The completely automated update for Smarty will work only if the Smarty has already an UDC compatible software version installed! It is possible to identify the UDC compatible version when the Data Version on Smarty's display starts with an "U:" Example: SJR59V514A_URS01A

4.1.2.1 In the UDC tuning software, select the menu: "Smarty > Smarty update manager". The Smarty update manager window will pop up.



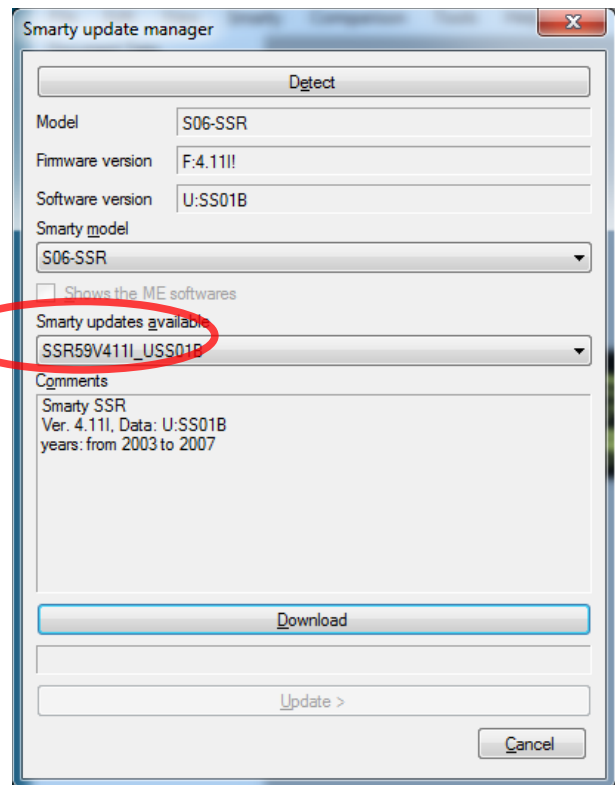
Revised date: 25/05/26

4.1.2.2 In the update manager window click on the "Detect" button. The PC will communicate with the Smarty and then check our website for the available and matching software updates. (This may take a few seconds.)



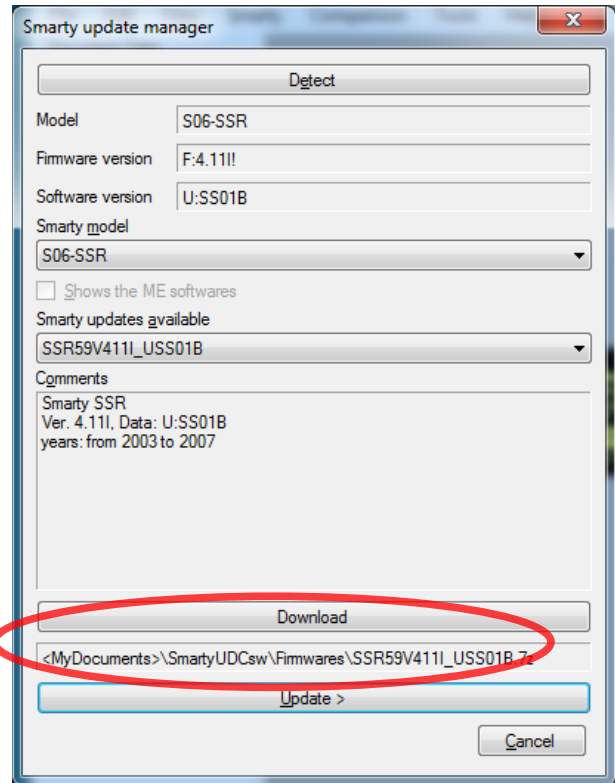
Revised date: 25/05/26

4.1.2.3 Under the title "Smarty updates available" you find a small window, click on it and select the update you wish to install on your Smarty (For example, the normal Revo software or the dedicated "TNTR" race only software). Once you have selected the software update you will see the description of that software in the "Comments" window. Should you want to select a different software, just go back to the "Smarty updates available" and select a different one.

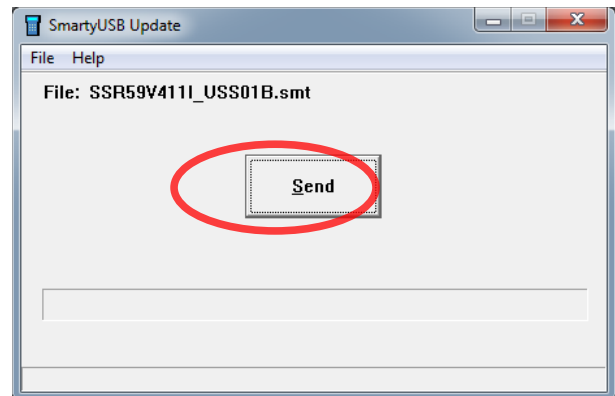


Revised date: 25/05/26

4.1.2.4 Now click on "Download" button in the update manager. The software update you have selected will be downloaded onto your PC. While the selected software is downloaded onto your PC, a window will become visible which shows the progress of the download. Once the download is completed the same window will show in which folder the file has been saved.

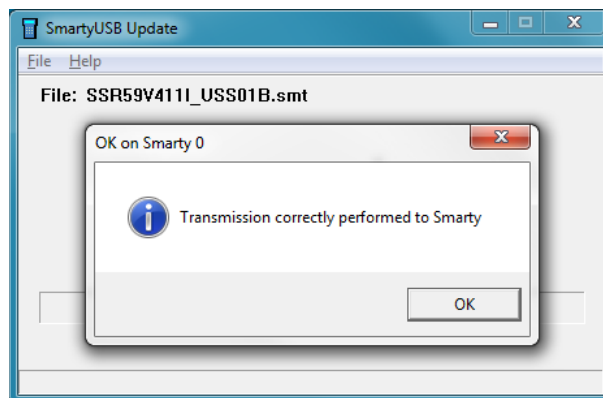


4.1.2.5 Once the download of the file has been completed, click on the "Update >" button. The Smarty USB software will launch automatically. Click on the "Send" button to start the actual update of your Smarty.



Revised date: 25/05/26

4.1.2.6 Follow the on screen instructions to complete the update process.



Advice!

During the update process, do NOT disconnect the Smarty, do not terminate the Smarty USB software, do NOT turn the computer off or you will need to repeat the whole sequence!

4.1.3 Updating a Smarty that has NOT already an UDC compatible software installed.

Notice.

If your Smarty does NOT already have a UDC compatible software update installed you need to follow a few simple steps to perform the update of your Smarty. It is possible to identify the UDC compatible version when the Data Version on Smarty's display starts with an "U:" Example: SJR59V514A_URS01A

If the software revision installed on your Smarty does not have the "U" in it's name then you need to select manually the model of your Smarty.

4.1.4 Connecting the Smarty to the PC

Warning!

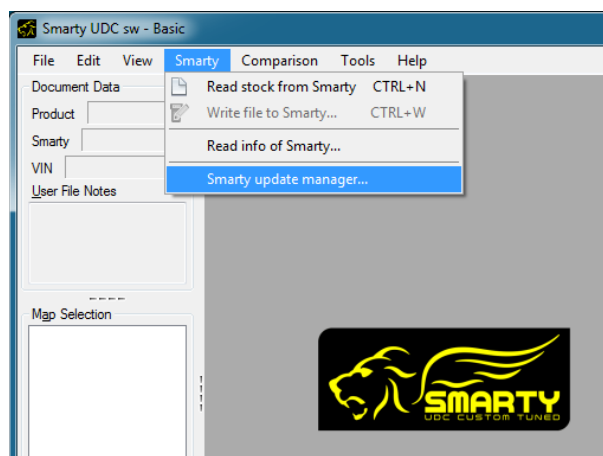
Never connect the Smarty to the vehicle and the PC at the same time. Severe damage to the Smarty and/or the PC will result. These defects will not be covered under warranty!

4.1.1.1 Connect the Smarty to a USB port on the PC.

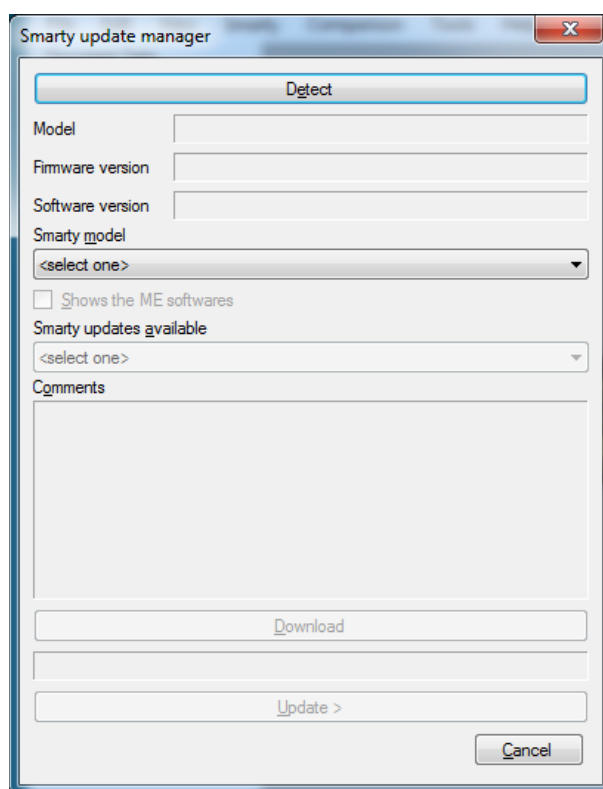
4.1.1.2 The Smarty will receive the power from the PC through the USB port. Wait for Smarty's main menu to show up on it's display.

Revised date: 25/05/26

4.1.1.3 In the UDC tuning software, select the menu: "Smarty > Smarty update manager". The Smarty update manager window will pop up.

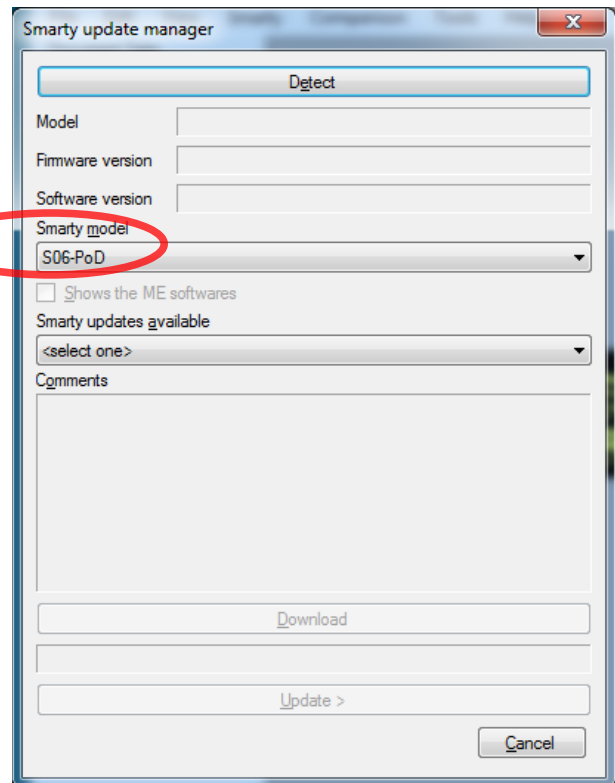


4.1.1.4 In the update manager window, you need to select manually the model of your Smarty since the UDCsw can not detect on it's own what Smarty is connected to the PC. To do this, you need to know what model your Smarty is. If you don't know, you need to check the serial # on the back side of your Smarty, the first letters and digits represent the model of your Smarty.



Revised date: 25/05/26

4.1.1.5 Once you know the model of your Smarty, click on the "Smarty Model" window and select your model from the drop down list.

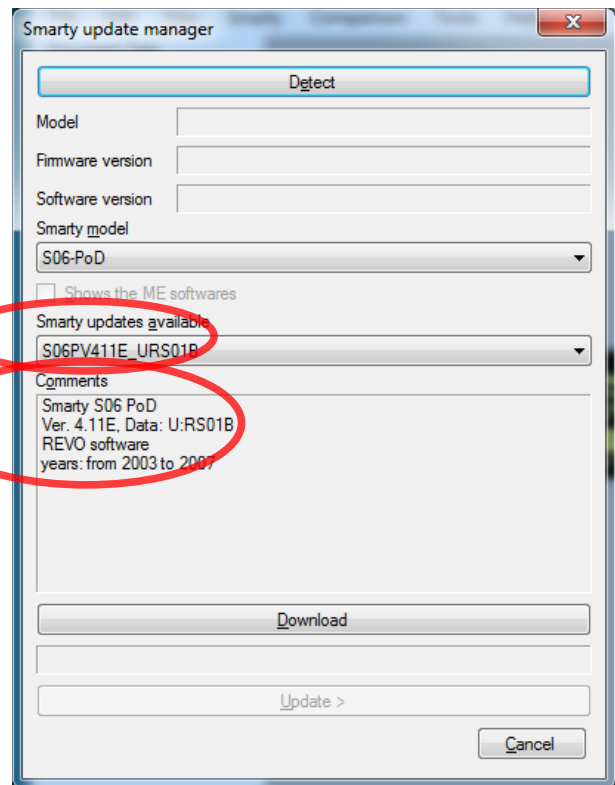


Revised date: 25/05/26

4.1.1.6 Under the title "Smarty updates available" you find a small window, click on it and select the update you wish to install on your Smarty (For example, the normal Revo software or the dedicated "TNTR" race only software).

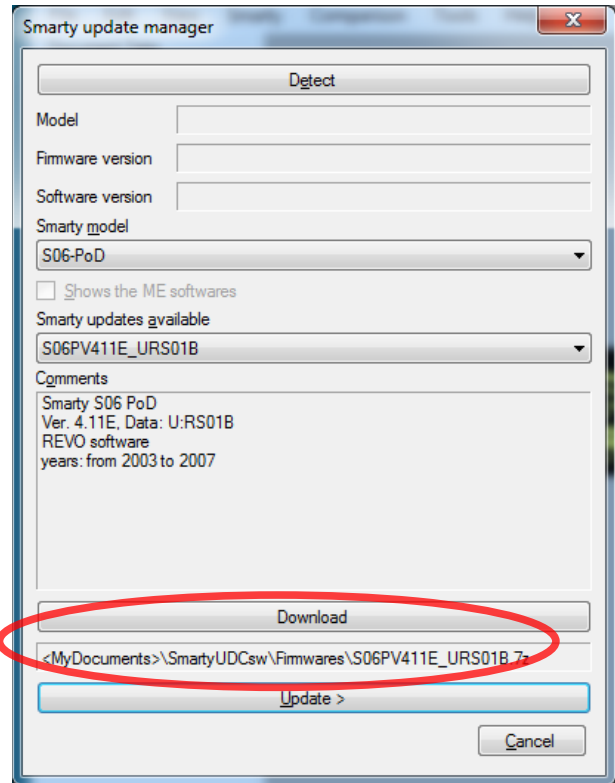
Once you have selected the software update you will see the description of that software in the "Comments" window.

Should you want to select a different software, just go back to the "Smarty updates available" and select a different one.

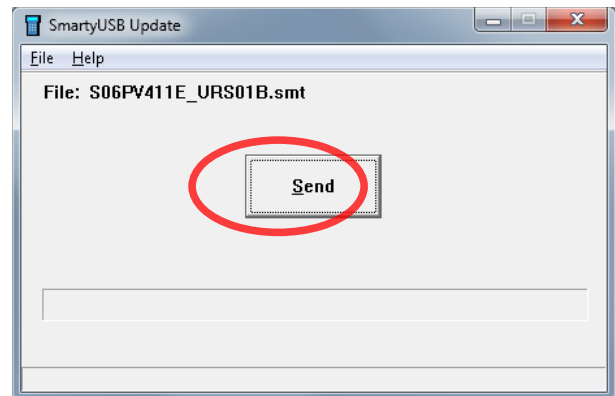


Revised date: 25/05/26

4.1.1.7 Now click on "Download" button in the update manager. The software update you have selected will be downloaded onto your PC. While the selected software is downloaded onto your PC, a window will become visible which shows the progress of the download. Once the download is completed the same window will show in which folder the file has been saved.

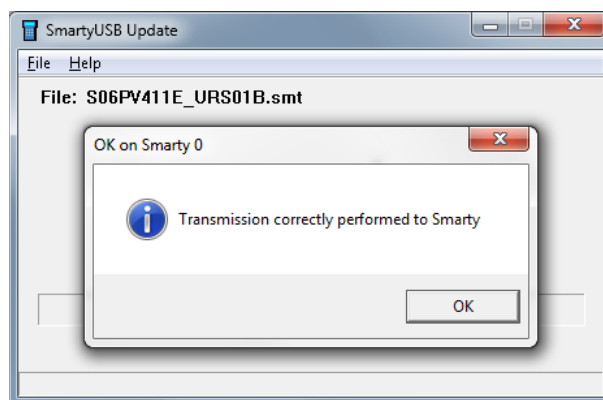


4.1.1.8 Once the download of the file has been completed, click on the "Update >" button. The Smarty USB software will launch automatically. Click on the "Send" button to start the actual update of your Smarty.



Revised date: 25/05/26

4.1.1.9 Follow the on screen instructions to complete the update process.



Advice!

During the update process, do NOT disconnect the Smarty, do not terminate the Smarty USB software, do NOT turn the computer off or you will need to repeat the whole sequence!

Revised date: 25/05/26

5 Associate or VIN# lock the Smarty to the vehicle

5.1 Connecting the Smarty to the vehicle

5.1.1 Disconnect the Smarty from the PC!

Warning!

Never connect the Smarty to the vehicle and the PC at the same time. Severe damage to the Smarty and/or the PC will result. These defects will not be covered under warranty!

5.1.1 Connect the Smarty to the vehicle's OBD port.

5.1.2 Smarty receives power from the vehicle's OBD port.

5.2 Associate or VIN# lock the Smarty to the vehicle

5.2.1 In order for the Smarty to work with the UDC tuning software, the Smarty first needs to know which vehicle he has to work with. This can be done either by VIN# locking the Smarty to the vehicle **OR** by "Associating" the Smarty to the vehicle. Whichever is easiest for you!

5.2.2 To VIN# lock the Smarty, the vehicle needs to be programmed with any of Smarty's standard CaTCHER power levels. During this process the Smarty reads the information's from the vehicle and VIN# locks to that vehicle. NO further action is required at that point for the Smarty to work with the UDC tuning software.

Hint: if your Smarty was already VIN @ locked to your vehicle when you updated the Smarty with the UDC compatible software, no further action is required.

5.2.3 In the case of a Smarty that is **NOT YET** VIN# locked to your vehicle (like for example, new out of the box) you can "Associate" the Smarty to your vehicle without the need to program the vehicle first with a performance software.

5.2.4 Connect the Smarty to your vehicle, wait for the main menu to show up and press the key: With the S06 & S67, press key # 9

With the JR, press the "<" and ">" keys at the same time.

The Smarty will read the information's he needs from the vehicle in about 2 seconds. Just follow the instructions on the display. (The Smarty will then VIN# lock to that vehicle once it's programmed for the first time)

5.2.5 Once EITHER of the above have been done, it is then possible to connect the Smarty to the PC and read the stock software for that vehicle from the Smarty. Once the stock software has been uploaded to the computer you can start to modify it. Once modified you can then update your Smarty with it and then update your vehicle with your own modifications. For complete instructions of the tuning software please refer to: "Help > Application Help" in the UDC tuning software.

Revised date: 25/05/26